

WD9 - Worm Drive Clamps



Worm drive clamps are produced in compliance with DIN 3017.



7mm hex-head screw for easier assembly

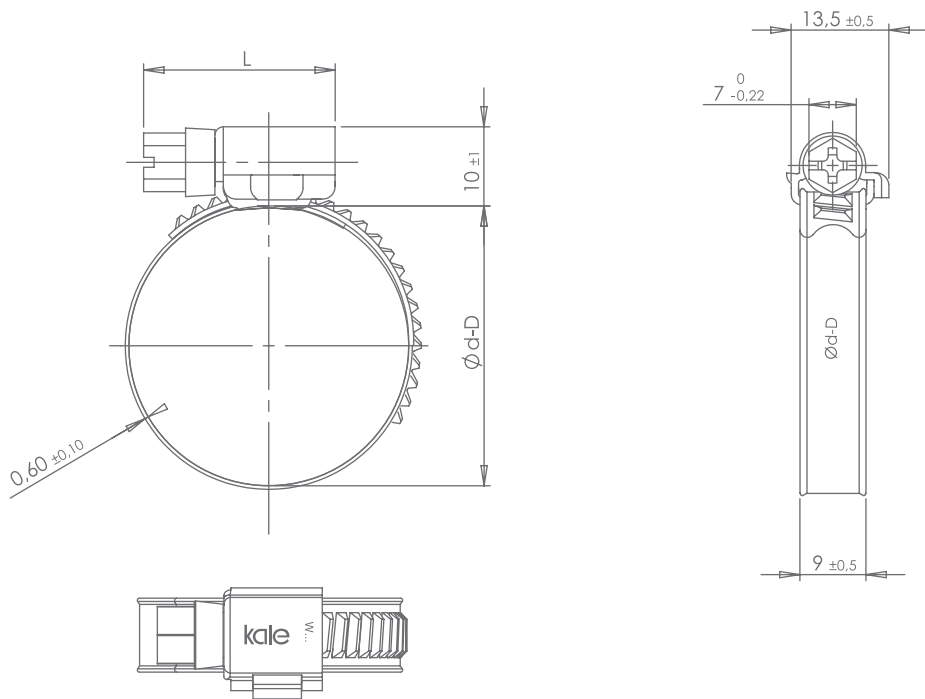


More durable and stronger with the one piece design and the mechanical locking mechanism.



Space and weight saving design

Technical Properties



| Ø d - D (mm) | W1 - W2 - W3 - W4 - W5 (Nm) | | L (mm) ± 2 |
|--------------|-----------------------------|--------|------------|
| | AD max | PD max | |
| 8-16 | 2,5 | 3,5 | 20 |
| 12-20 | 2,5 | 3,5 | 20 |
| 12-22 | 3,0 | 4,0 | 24 |
| 16-25 | 3,0 | 4,0 | 24 |
| 16-27 | 3,0 | 4,0 | 24 |
| 20-32 | 3,0 | 4,0 | 24 |
| 23-35 | 3,0 | 4,0 | 24 |
| 25-40 | 3,0 | 4,5 | 24 |
| 30-45 | 3,0 | 4,5 | 24 |
| 32-50 | 3,0 | 4,5 | 24 |
| 40-60 | 3,0 | 4,5 | 24 |
| 50-70 | 3,0 | 4,5 | 24 |
| 60-80 | 3,0 | 4,5 | 24 |
| 70-90 | 3,0 | 4,5 | 24 |
| 80-100 | 3,0 | 4,5 | 24 |
| 90-110 | 3,0 | 4,5 | 24 |
| 100-120 | 3,0 | 4,5 | 24 |
| 110-130 | 3,0 | 4,5 | 24 |
| 120-140 | 3,0 | 4,5 | 24 |
| 130-150 | 3,0 | 4,5 | 24 |
| 140-160 | 3,0 | 4,5 | 24 |
| ... | ... | ... | ... |
| 380-400 | 3,0 | 4,5 | 24 |

| Screw Head | Philips Type | Slotted |
|------------|--------------|---------|
| | | |
| W1 | ● | |
| W2 | ● | |
| W3 | | ● |
| W4 | | ● |
| W5 | | ● |

| Material Code | Housing | Screw | Band |
|---------------|---|---|---|
| W1 | Mild steel | Mild steel | Mild steel |
| W2 | 1.4016 DIN EN-10088-2 or equivalent | Mild steel | 1.4016 DIN EN-10088-2 or equivalent |
| W3 | 1.4016 DIN EN-10088-2 or equivalent | 1.4016 DIN EN-10088-3 or equivalent | 1.4016 DIN EN-10088-2 or equivalent |
| W4 | 1.4301 DIN EN-10088-2 or equivalent | 1.4301 DIN EN-10088-3 or equivalent | 1.4301 DIN EN-10088-2 or equivalent |
| W5 | 1.4401 DIN EN-10088-2 or equivalent | 1.4401 DIN EN-10088-3 or equivalent | 1.4401 DIN EN-10088-2 or equivalent |

AD: Recommended tightening torque
 PD: Testing torque